

The Language Menu

Three electronic devices are shown in separate blue-bordered boxes. The first box contains a silver and blue mobile phone. The second box contains a silver digital camera. The third box contains a silver digital clock displaying '12:00'.

The Language Menu

Three electronic devices are shown in separate boxes:

- Mobiltelefon**: A green and silver flip phone.
- Kamera**: A silver digital camera.
- Klockradio**: A red digital clock radio.

The Language Menu

Three electronic devices are shown in separate boxes: a mobile phone, a camera, and a digital clock.

The Language Menu

Mobiletelefon

Kamera

Klockradio

The Language Menu

Three electronic devices are shown in separate blue-bordered boxes. The first box contains a green and silver mobile phone with the label 'Mobiltelefon'. The second box contains a silver digital camera with the label 'Kamera'. The third box contains a silver digital clock with the label 'Klokkradio'.

The Language Menu

Three electronic devices are shown in separate blue-bordered boxes. The first box contains a silver mobile phone with a small screen and many buttons, labeled 'Mobiltelefon'. The second box contains a silver digital camera, labeled 'Kamera'. The third box contains a silver digital clock with a red LED display showing '12:00', labeled 'Klockradio'.

The Language Menu

Three electronic devices are shown in separate blue-bordered boxes. The first box contains a green and silver flip phone with the label 'Mobiltelefon' below it. The second box contains a silver digital camera with the label 'Kamera' below it. The third box contains a red digital clock radio with the label 'Klokkradio' below it.

The Language Menu

Three electronic devices are shown in separate blue-bordered boxes. The first box contains a silver and blue mobile phone with the label 'Mobiltelefon' below it. The second box contains a silver digital camera with the label 'Kamera' below it. The third box contains a red digital clock showing '12:00' with the label 'Klokkradio' below it.

The Language Menu

Mobiletelefon

Kamera

Klockradio

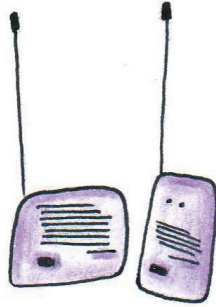
The Language Menu

Three electronic devices are shown in separate blue-bordered boxes. The first box contains a silver and blue mobile phone with the label 'Mobiltelefon' below it. The second box contains a silver digital camera with the label 'Kamera' below it. The third box contains a silver digital clock radio with the label 'Klokkradio' below it.

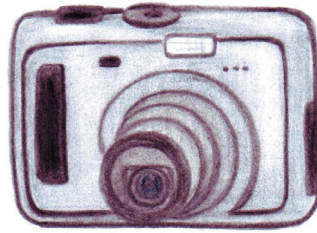
Hushållsmaskiner



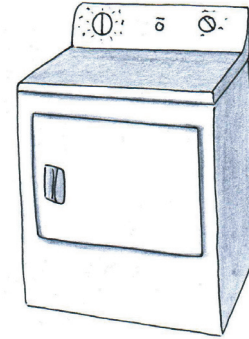
Klockradio



Babycall



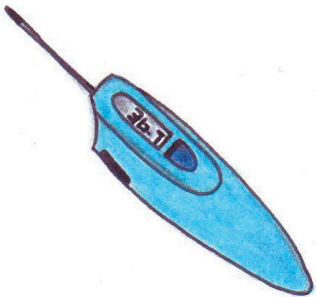
Kamera



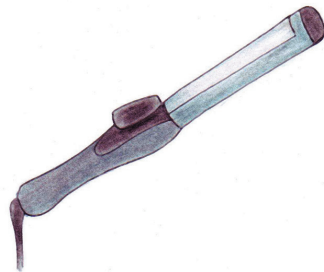
Torktumlare



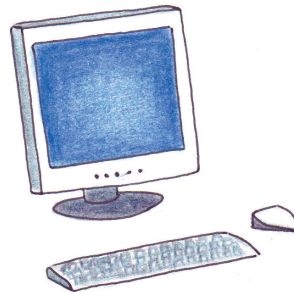
Kaffebryggare



**Digital
termometer**



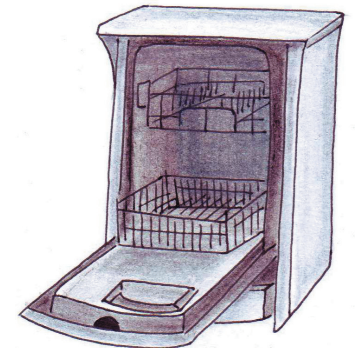
Locktång



Dator



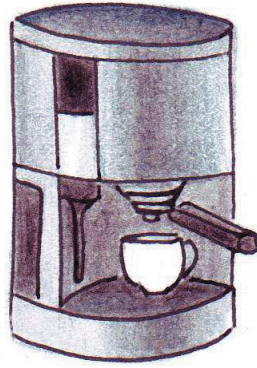
**Trådlös
telefon**



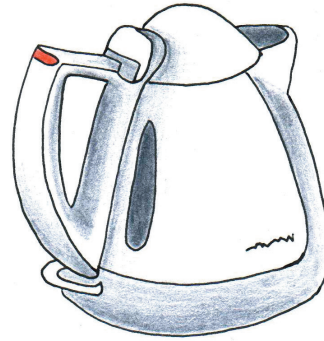
Diskmaskin



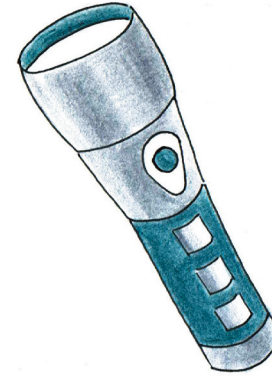
Borr



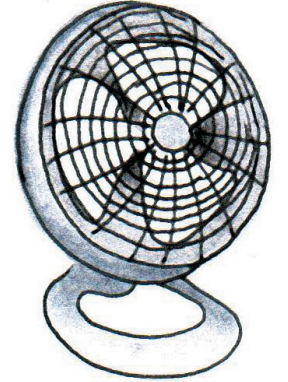
**Espresso-
bryggare**



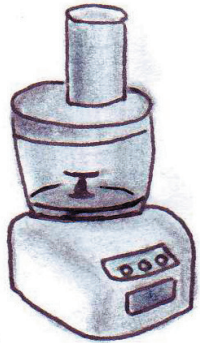
Vattenkokare



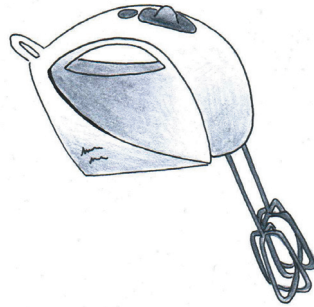
Ficklampa



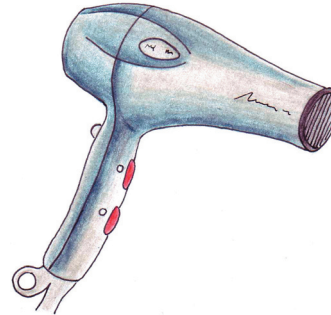
Fläkt



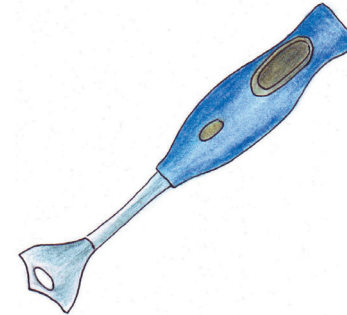
Matberedare



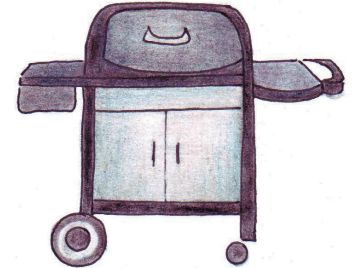
Elvisp



Hårtork



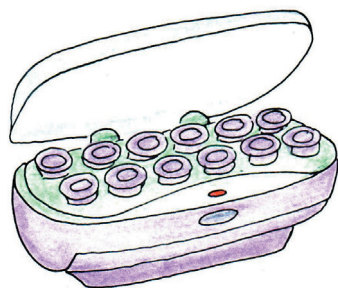
Stavmixer



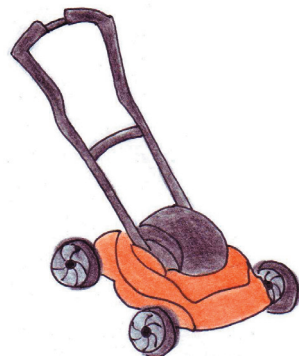
Grill



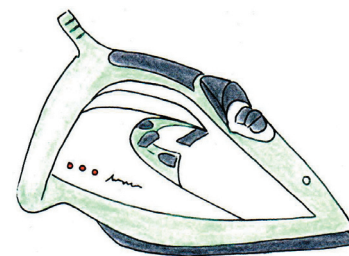
Hörlurar



Värmerullar



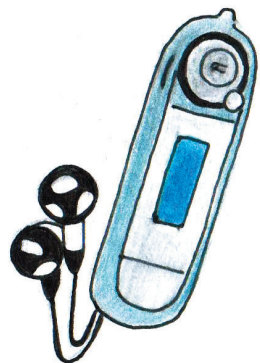
Gräsklippare



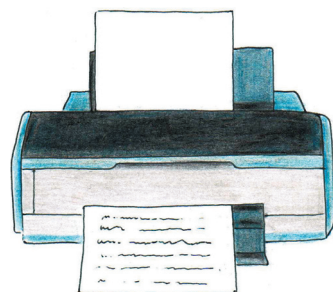
Strykjärn



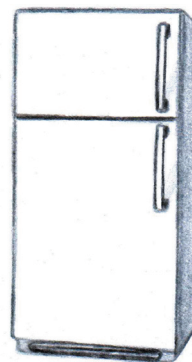
Lampa



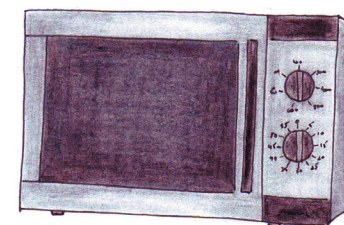
MP3-spelare



Skrivare



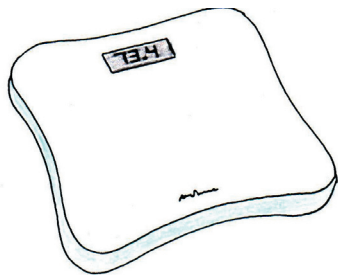
Kylskåp



Mikrovågsugn



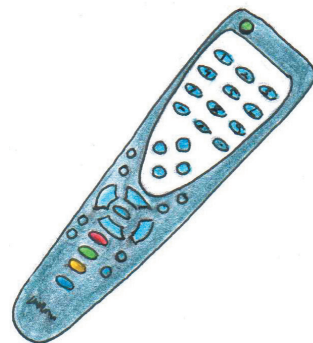
Mobiltelefon



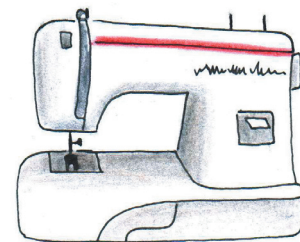
Våg



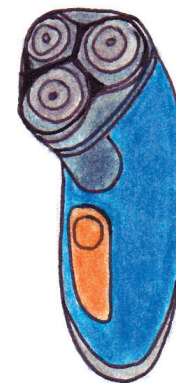
Skanner



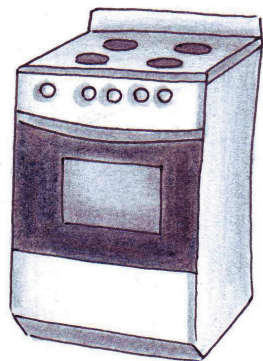
Fjärrkontroll



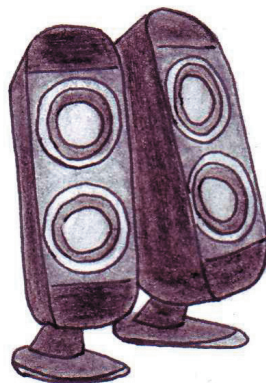
Symaskin



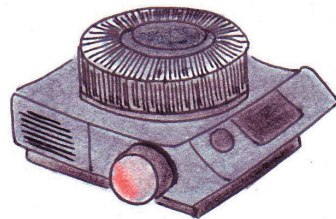
Rakmaskin



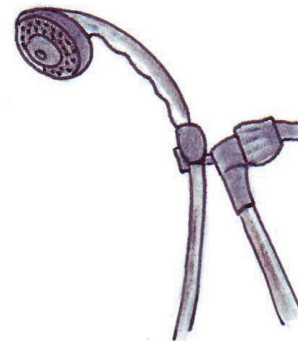
Spis



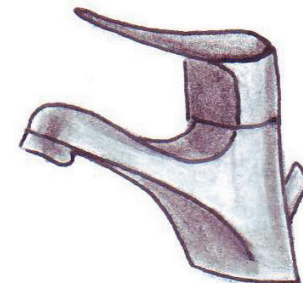
Högtalare



Diaprojektor



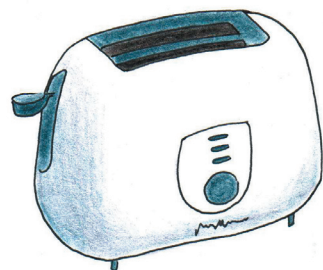
Dusch



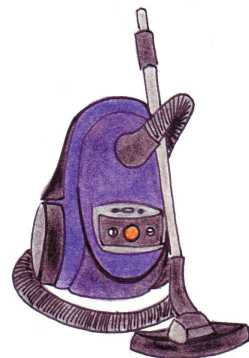
Vattenkran



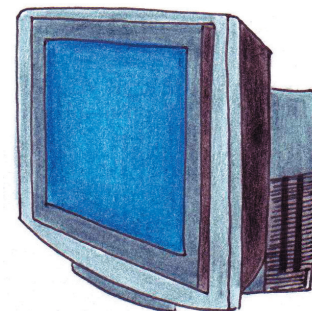
Skivspelare



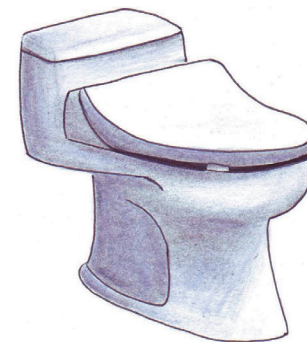
Brödrost



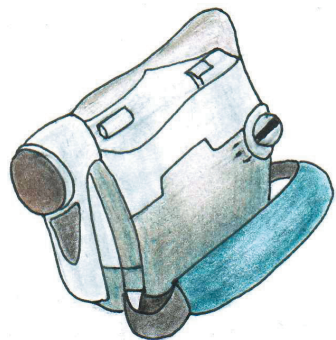
Dammsugare



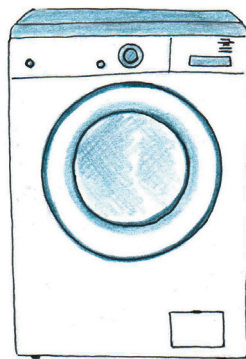
Television



Toalett



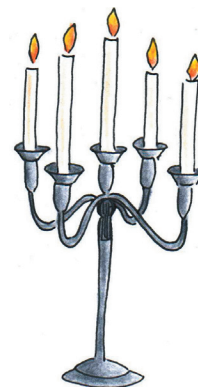
Videokamera



Tvättmaskin



**Elektrisk
tandborste**



Kandelaber



Kalkylator