

The Language Menu

Three boxes illustrating prepositions:

- Into:** A blue ball is entering a white box.
- Above:** A blue ball is floating above a white box.
- Between:** A blue ball is positioned between two white boxes.

The Language Menu

Into

Above

Between

The Language Menu

Three boxes illustrating prepositions:

- Into:** A blue ball is entering a white box. A curved arrow indicates the path of the ball.
- Above:** A blue ball is floating above a white box.
- Between:** A blue ball is positioned between two white boxes.

The Language Menu

The Language Menu

The Language Menu

The Language Menu

Three boxes illustrating prepositions:

- Into:** A blue ball is entering a white box.
- Above:** A blue ball is floating above a white box.
- Between:** A blue ball is positioned between two white boxes.

The Language Menu

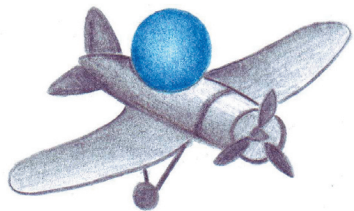
Three boxes illustrating prepositions:

- Into:** A blue ball is entering a white box.
- Above:** A blue ball is floating above a white box.
- Between:** A blue ball is positioned between two white boxes.

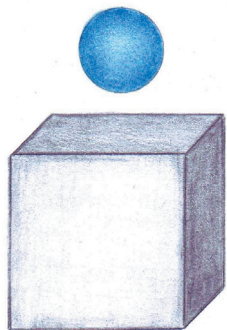
The Language Menu

The Language Menu

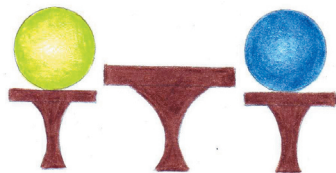
Prepositions



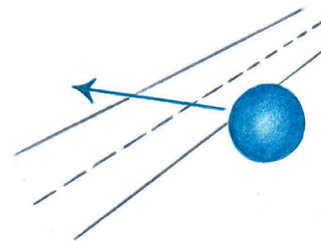
Aboard



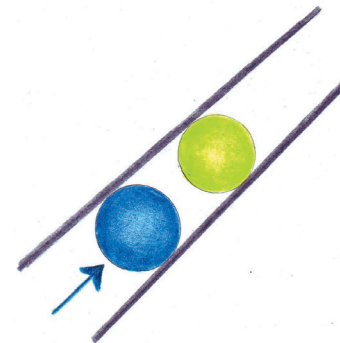
Above



Across from



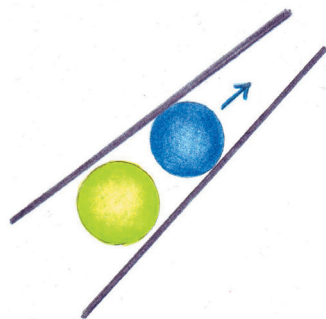
Across



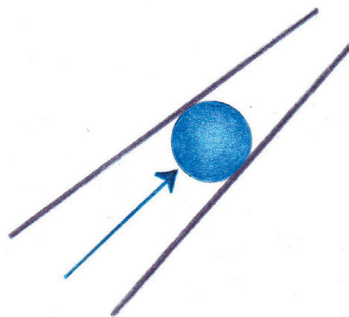
After



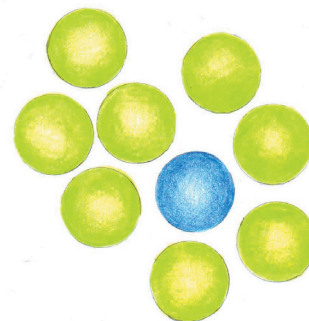
Against



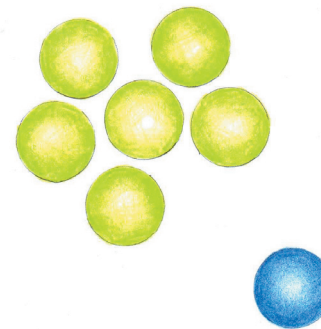
Ahead of



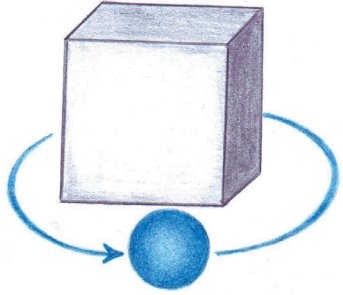
Along



Among



Apart from



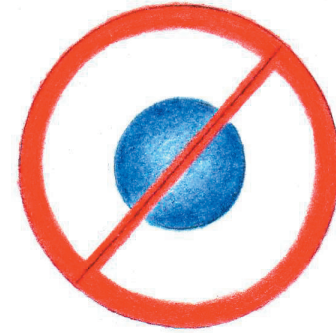
Around



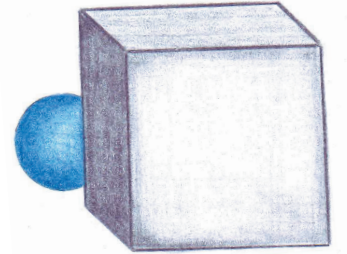
Astride



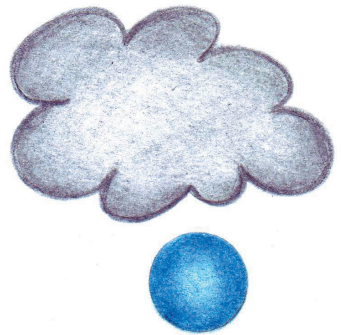
Away from



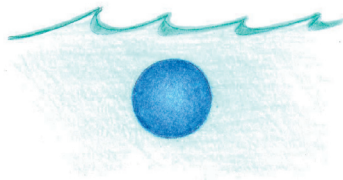
Barring



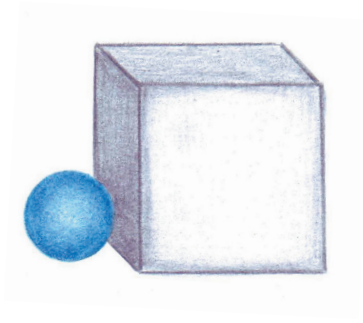
Behind



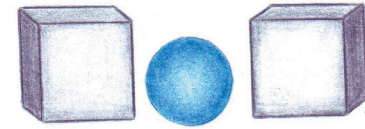
Bellow



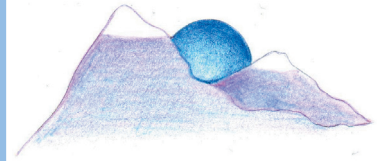
Beneath



Beside



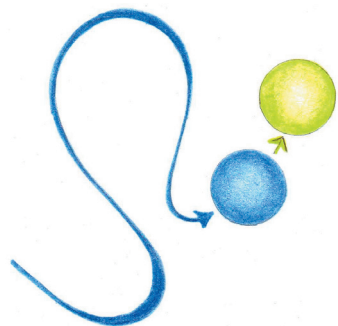
Between



Beyond



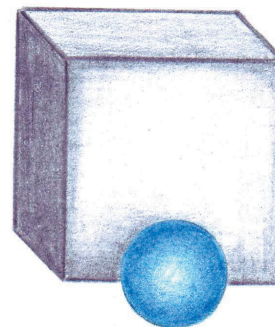
Down



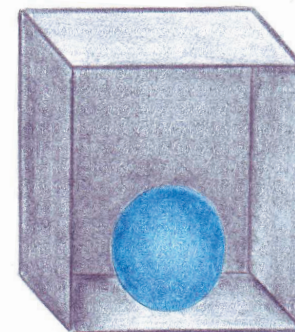
Following



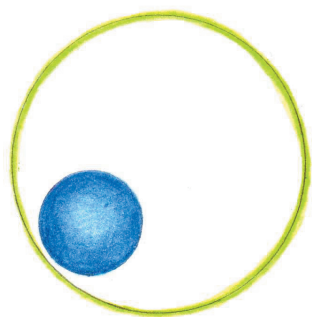
Forwards



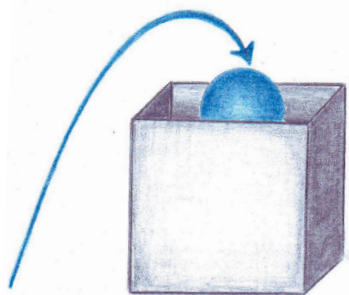
In front of



In



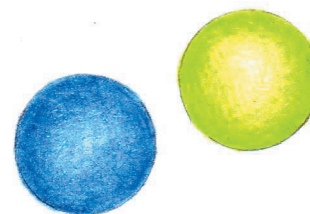
Inside of



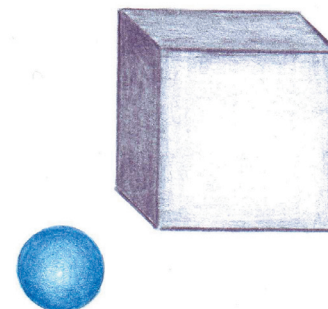
Into



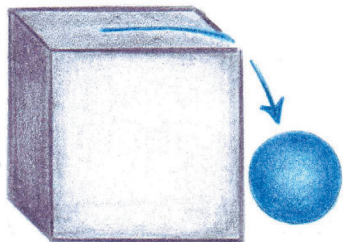
Minus



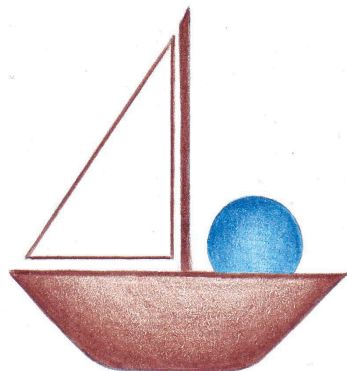
Near to



Near



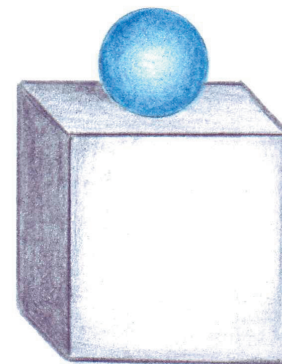
Off



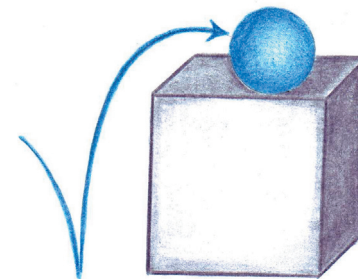
On board



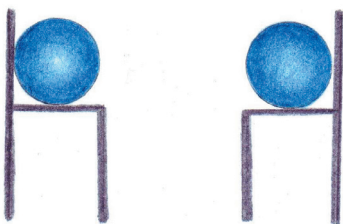
On top of



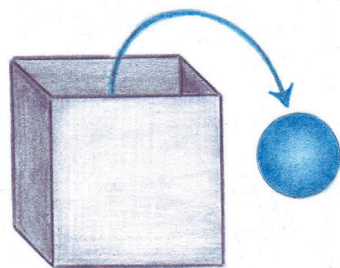
On



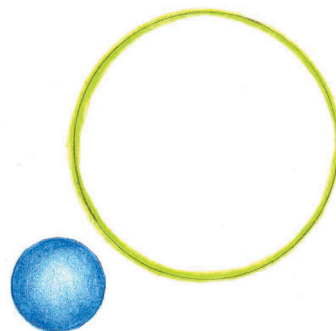
Onto



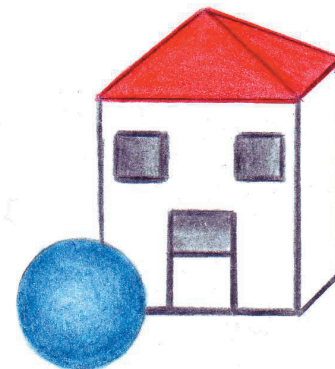
Opposite to



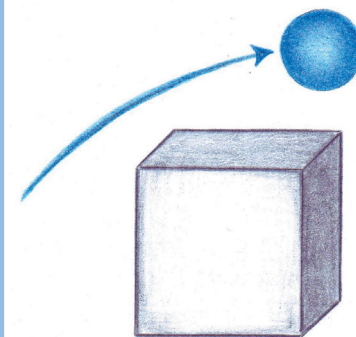
Out of



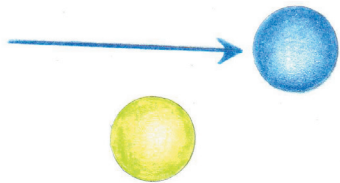
Outside of



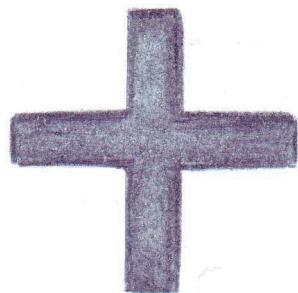
Outside



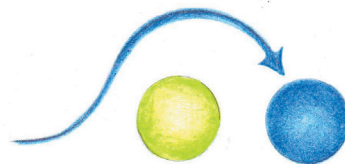
Over



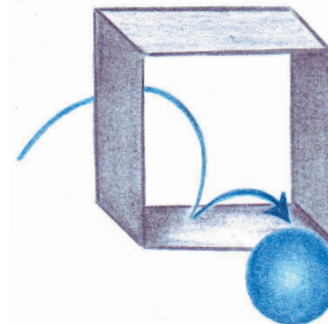
Past



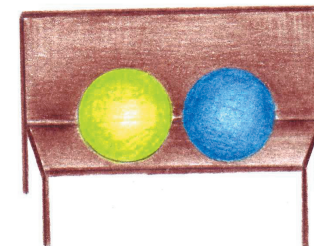
Plus



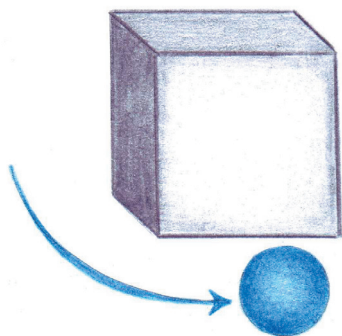
Round



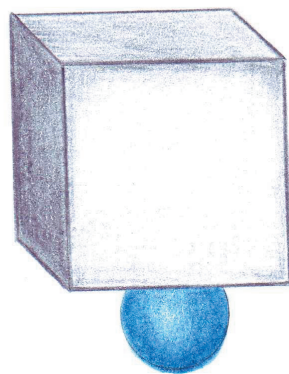
Through



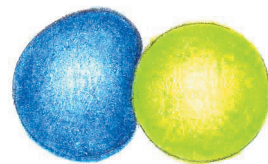
Together with



Under



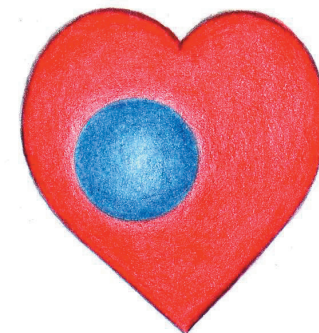
Underneath



Up against



Up



Within