

The Language Menu

Three cards are shown, each with a blue border. The first card on the left features a yellow and black striped bee with the name 'Kimalainen' written below it. The middle card features a purple and white striped seahorse with the name 'Merihevonen' written below it. The third card on the right features a black and white puffin with an orange beak and feet, with the name 'Lunni' written below it.

The Language Menu

Three cards are shown, each with a blue border. The first card on the left has a yellow and black striped bee illustration and the name 'Kimalainen' below it. The middle card has a purple seahorse illustration and the name 'Merilhevonen' below it. The third card on the right has a black and white penguin illustration and the name 'Lunni' below it.

The Language Menu

The Language Menu

Three cards are shown, each with an illustration and a name below it. The first card on the left has a blue background and shows a yellow and black bee. The middle card has a white background and shows a purple seahorse. The third card on the right has a blue background and shows a penguin. Each card is part of a larger set of six cards arranged in a 2x3 grid.

Kimalainen

Merihevonen


Lunni

The Language Menu

The Language Menu

 <p>Kimalainen</p>	 <p>Merihevonen</p>	 <p>Lunni</p>
---	--	--

The Language Menu

 <p>Kimalainen</p>	 <p>Merihevonen</p>	 <p>Lunni</p>
---	--	--

The Language Menu

The Language Menu

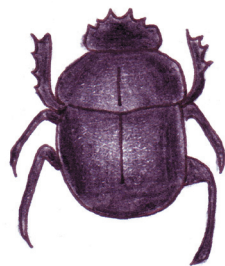
Three cards are shown, each with an illustration and a name below it. The first card on the left has a yellow and black bee illustration and the name 'Kimalainen'. The middle card has a purple seahorse illustration and the name 'Meribevonen'. The third card on the right has a penguin illustration and the name 'Lunni'.

The Language Menu

Eläimet 3



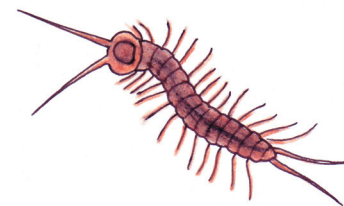
Seepra



**Koppa-
kuoriainen**



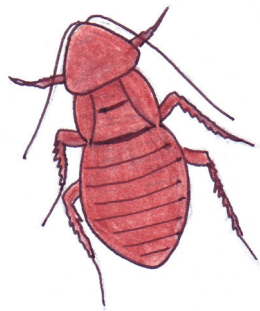
Kimalainen



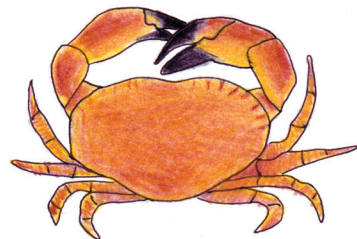
Tuhatjalkanen



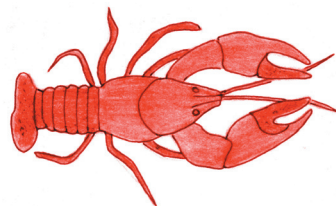
Simpukka



Torakka



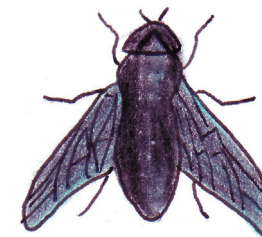
Rapu



Rapu



Dingo



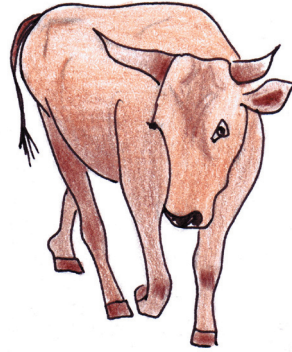
Paarma



Jaguaari



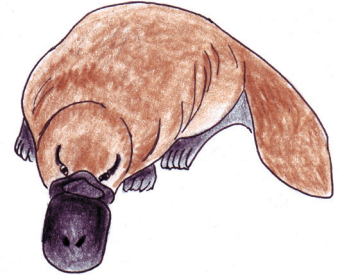
Ilves



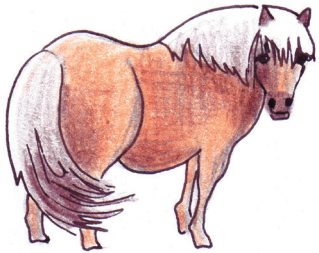
Härkä



Panda



Vesinokkaeläin



Poni



Opossumi



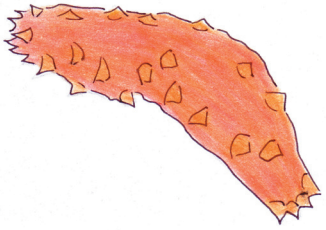
Pteranodon



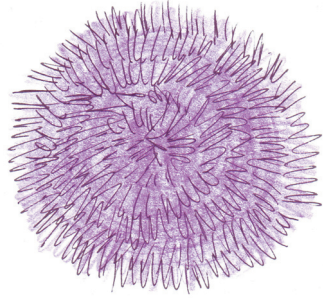
Rotta



Merivuokko



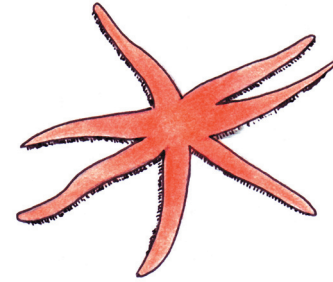
Merikurkku



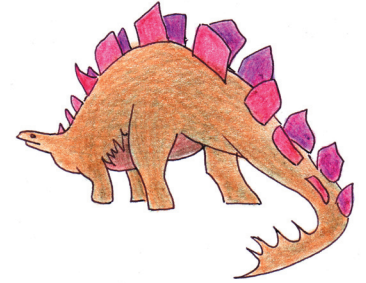
Merisiili



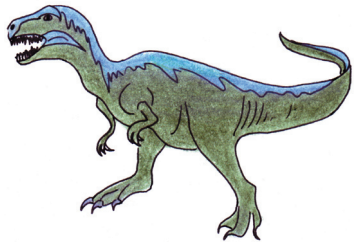
Merihevonen



Meritähti



Stegosaurus



**Tyrannosaurus
Rex**



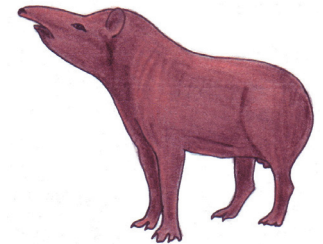
Pussiahma



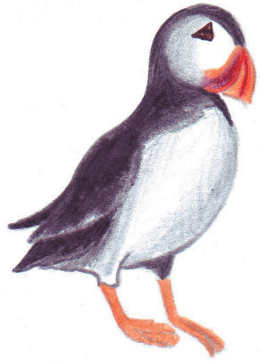
Lumikko



Rupisammakko



Tapiiri



Lunni



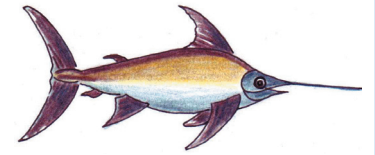
Rausku



Haikara



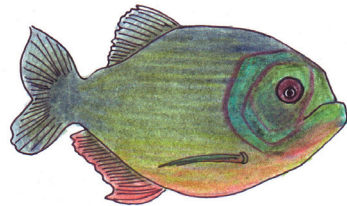
Katkarapu



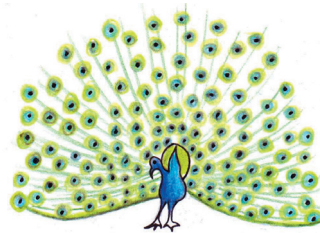
Miekkakala



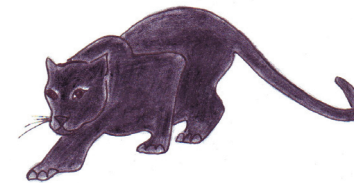
Magnusti



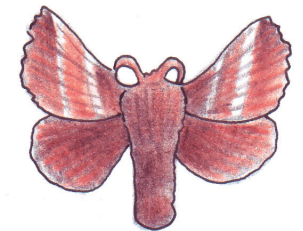
Piraija



Riikinkukko



Pantteri



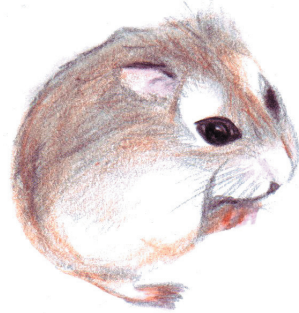
Koi



Puoliapina



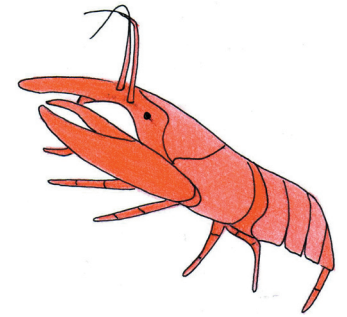
Murmeli



Hamsteri



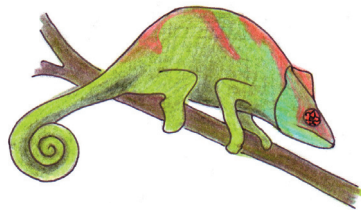
Varaani



Hummeri



Paviaani



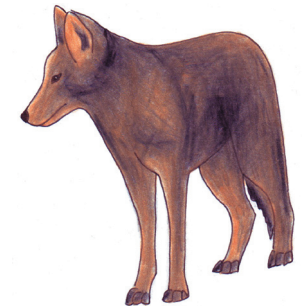
Kameleontti



Puuma



Kyyhkynen



Kojootti